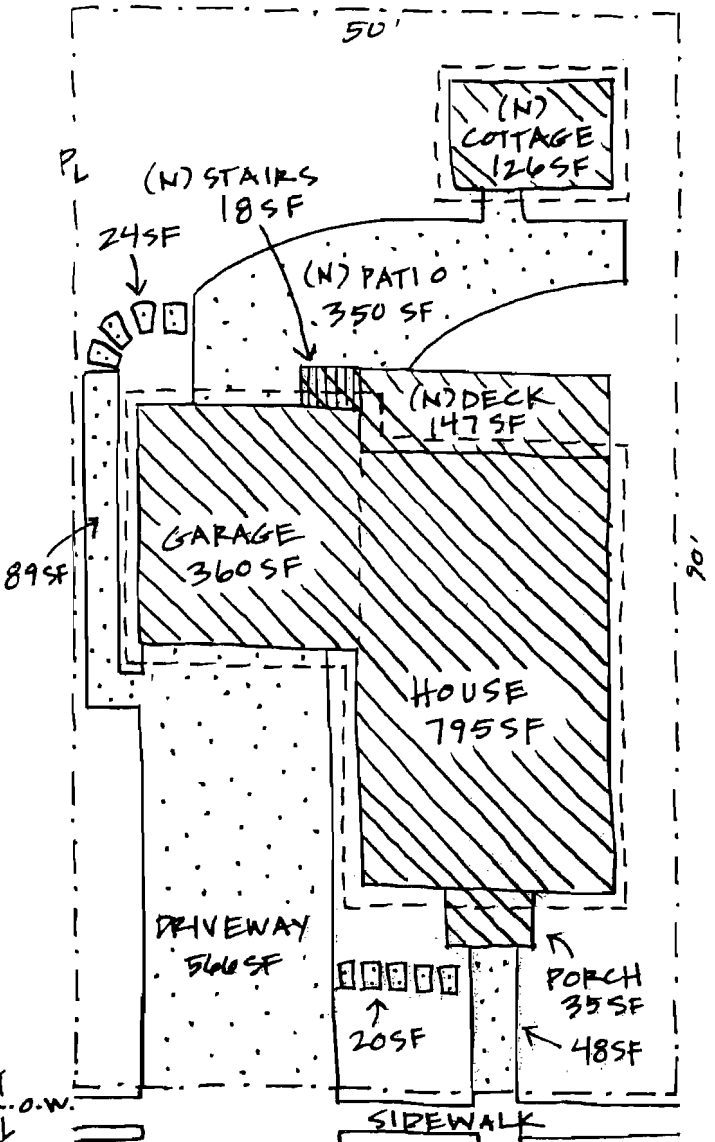
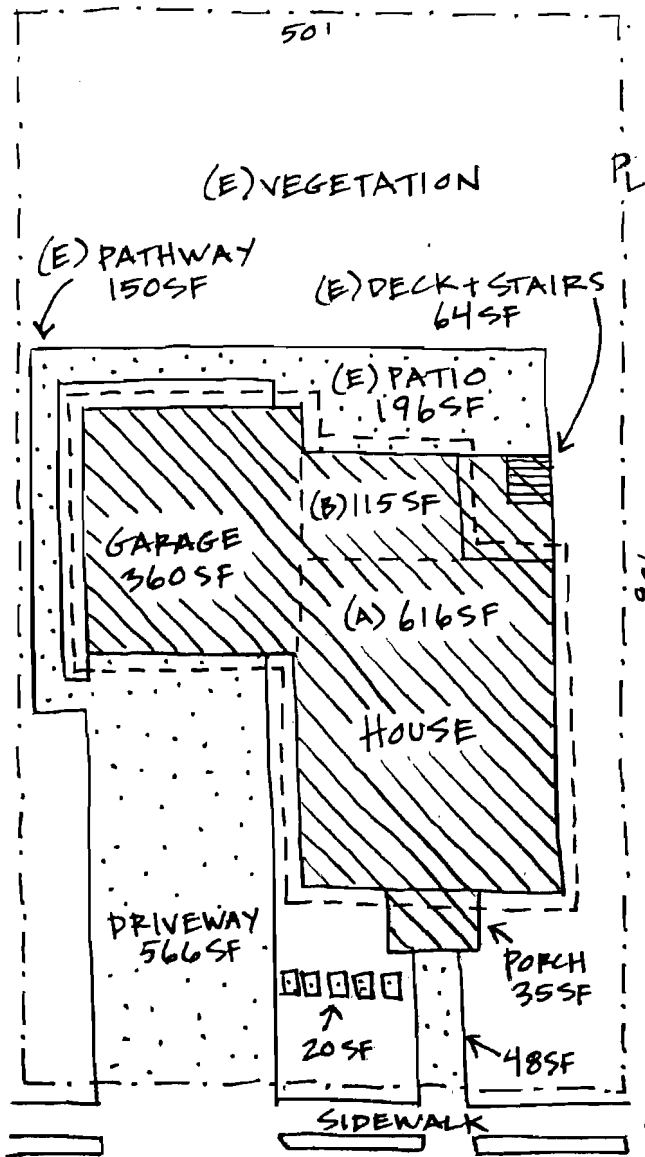


# CALCULATIONS FOR 100 MAIN STREET

1" = 16'



LOT SIZE = 4500 SF

## EXISTING

(E) STRUCTURE	Area
HOUSE (A)	616 SF
HOUSE (B)	115 SF
GARAGE	360 SF
DECK + STAIRS	64 SF
PORCH	35 SF
<b>TOTAL</b>	<b>1,190 SF = 26.4%</b>

(E) IMPERVIOUS	Area
TOTAL STRUCTURE	1,190 SF
DRIVEWAY	566 SF
FR. PATHWAY	48 SF
STEP. STONES	20 SF
PATHWAY	150 SF
PATIO	196 SF
<b>TOTAL</b>	<b>2,170 SF = 48.2%</b>

## PROPOSED

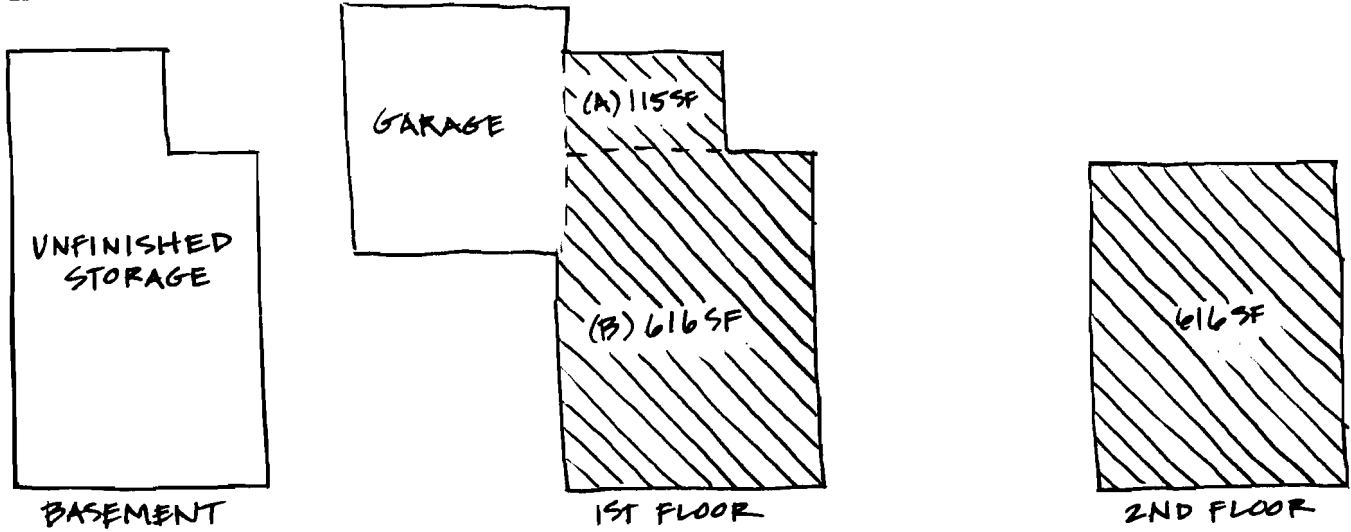
(P) STRUCTURE	Area
HOUSE	795 SF
GARAGE	360 SF
DECK	147 SF
STAIRS	18 SF
PORCH	35 SF
COTTAGE	126 SF
<b>TOTAL</b>	<b>1,481 SF = 32.9%</b>

(P) IMPERVIOUS	Area
TOTAL STRUCTURE	1,481 SF
DRIVEWAY	566 SF
FR. PATHWAY	48 SF
FR. STEP. STONES	20 SF
PATHWAY	89 SF
BACK STEP. STONES	24 SF
PATIO	350 SF
<b>TOTAL</b>	<b>2,578 SF = 57.3%</b>

# CALCULATIONS FOR 100 MAIN STREET (CONT.)

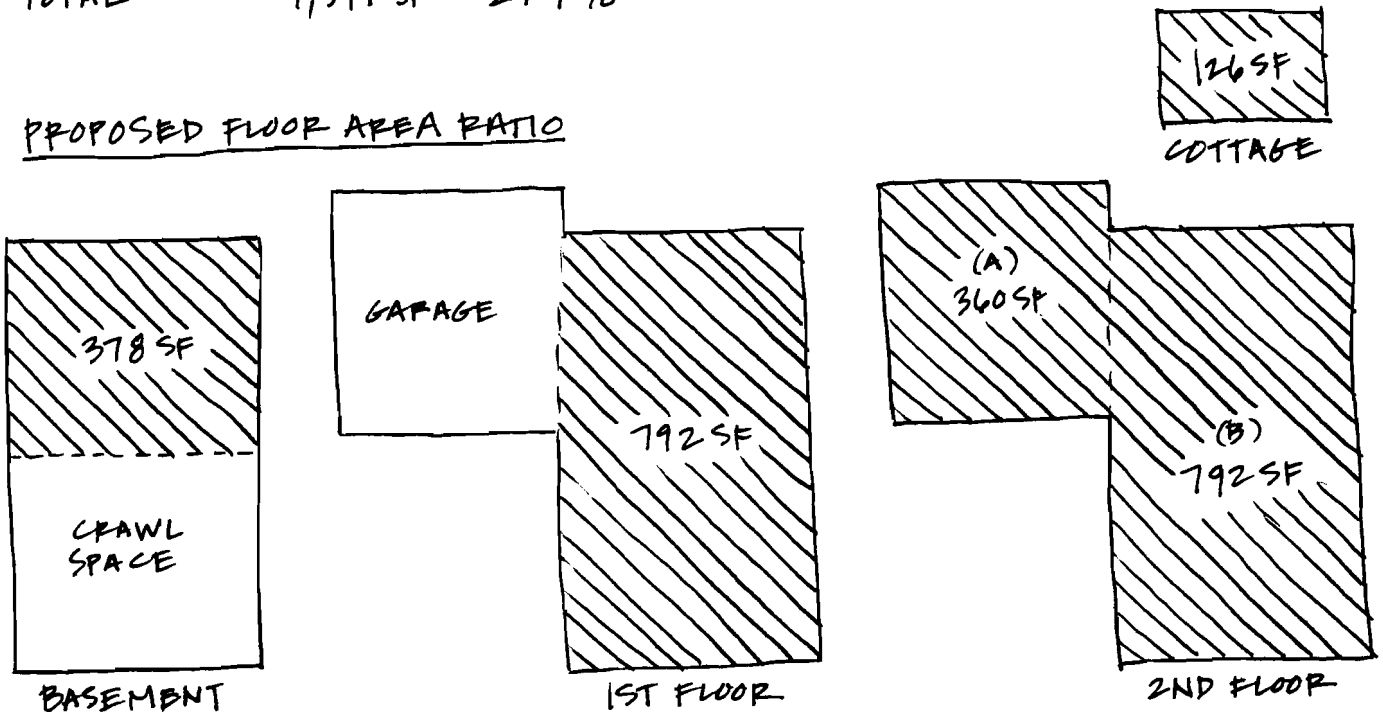
1" = 16'

## EXISTING FLOOR AREA RATIO



BASEMENT	0 SF
1ST FLOOR (A)	115 SF
1ST FLOOR (B)	616 SF
2ND FLOOR	616 SF
<b>TOTAL</b>	<b>1,347 SF = 29.9%</b>

## PROPOSED FLOOR AREA RATIO



BASEMENT	378 SF
1ST FLOOR	792 SF
2ND FLOOR (A)	360 SF
2ND FLOOR (B)	792 SF
COTTAGE	126 SF
<b>TOTAL</b>	<b>2,448 SF = 54.4%</b>